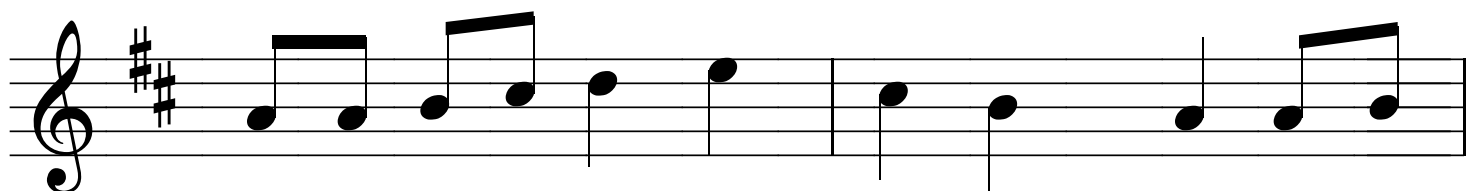


We shall overcome - - We shall overcome - -



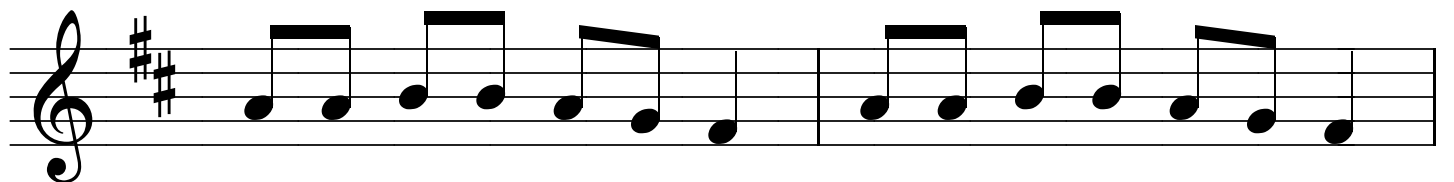
We shall overcome someday - ay-ay-ay-ay! Oh yes,

deep in my heart I do believe

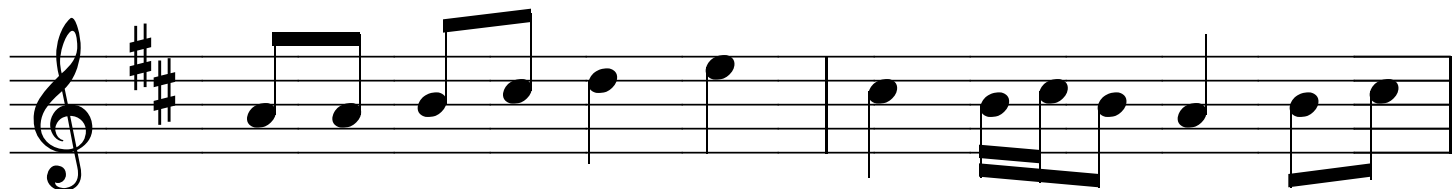
The first line of musical notation is on a single staff with a treble clef and a key signature of two sharps (F# and C#). The melody consists of the following notes: a quarter note G4, a quarter note A4, a quarter note B4, a quarter note C5, a quarter rest, a quarter note G4, a quarter note F#4, a quarter note E4, and a quarter note D4.

we shall overcome some day!

The second line of musical notation is on a single staff with a treble clef and a key signature of two sharps (F# and C#). The melody consists of the following notes: a quarter note G4, a quarter note A4, a quarter note B4, a quarter note C5, a quarter note B4, a quarter note A4, a quarter note G4, a quarter note F#4, a quarter note E4, and a quarter note D4.



We shall \_\_\_\_\_ We shall \_\_\_\_\_



We shall \_\_\_\_\_ some day — ay-ay-ay-ay! Oh yes,

deep in my heart I do believe

The first line of music is written on a single staff in treble clef with a key signature of two sharps (F# and C#). The melody consists of the following notes: a quarter note on G4, a quarter note on A4, a quarter note on B4, a half note on C5, a quarter note on B4, a quarter note on A4, a quarter note on G4, a quarter note on F#4, a quarter note on E4, and a quarter note on D4. The lyrics are placed below the notes: 'deep' under G4, 'in' under A4, 'my' under B4, 'heart' under C5, 'I' under B4, 'do' under A4, and 'believe' under G4.

we shall \_\_\_\_\_ some day!

The second line of music is written on a single staff in treble clef with a key signature of two sharps (F# and C#). The melody consists of the following notes: a quarter note on G4, a quarter note on A4, a quarter note on B4, a quarter note on C5, a quarter note on B4, a quarter note on A4, a quarter note on G4, a quarter note on F#4, a quarter note on E4, and a quarter note on D4. The lyrics are placed below the notes: 'we' under G4, 'shall' under A4, a long horizontal line under B4, C5, D5, E5, and F#5, 'some' under G4, and 'day!' under D4.