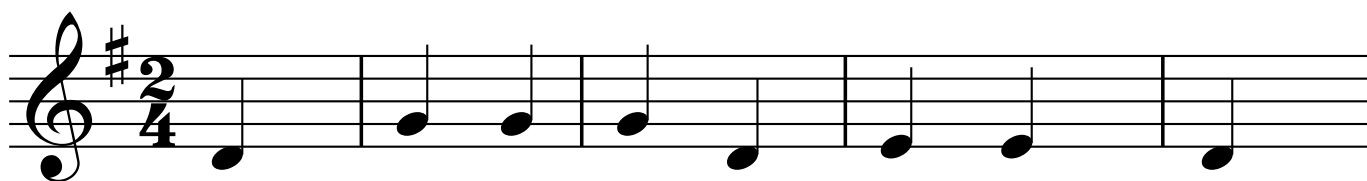


There Was A Man

traditional

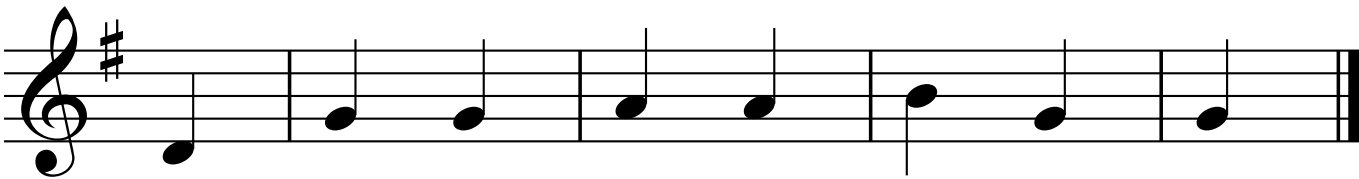


There was a man and he was _____

Musical notation on a treble clef staff with a key signature of one sharp (F#). The melody consists of the following notes: G4 (quarter), A4 (quarter), B4 (quarter), C5 (quarter), B4 (quarter), A4 (quarter), G4 (quarter), F#4 (quarter), E4 (quarter), D4 (quarter). The lyrics "So he" are written below the first two notes. A horizontal line is drawn below the staff, starting from the end of the second measure and extending to the right.

The _____ it was so _____

The musical notation consists of a single staff in treble clef with a key signature of one sharp (F#). The melody is composed of eight quarter notes: G4, A4, B4, C5, B4, A4, G4, and F#4. The lyrics 'The', 'it was so', and '_____ ' are positioned below the staff, with horizontal lines indicating the placement of the missing words.



He

